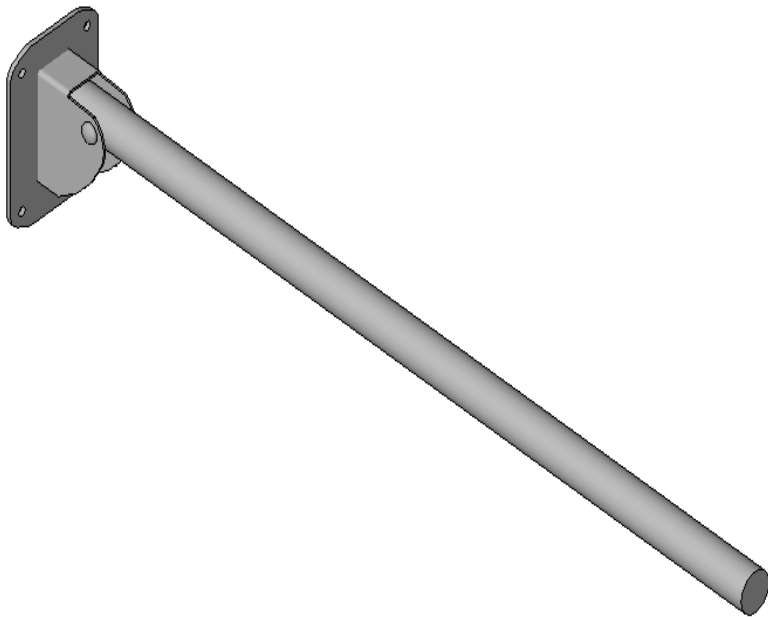


# DOLPHIN SOLUTIONS LIMITED

## DOLPHIN CONTEMPORARY GRAB BAR

### BC5023-07



Family Types

Name: BC5023-07 Dolphin Contemporary Grab Rail

Parameter	Value
<b>Materials and Finishes</b>	
Material	Stainless Steel
Finish	Polished
<b>Dimensions</b>	
Width	Bracket = 100mm      Grab bar = Ø32mm
Projection	800mm
Height above FFL - Horizontal mounting	Recommended 680mm to top surface of rail
Height	Bracket = 140mm
<b>General</b>	
Product Page Link	<a href="https://www.dolphinsolutions.co.uk/en/product/hinged-contemporary-straight-support-rail/">https://www.dolphinsolutions.co.uk/en/product/hinged-contemporary-straight-support-rail/</a>
Product Data	High quality stainless steel construction. Minimalist contemporary design. Rail folds up. Fixings not
<b>Identity Data</b>	
URL	<a href="http://www.dolphinsolutions.co.uk">www.dolphinsolutions.co.uk</a>
Tel No.	+44 (0) 1424 202224
Model	BC5023-07
Manufacturer	Dolphin Solutions Limited
Fax No.	+44 (0) 1424 205200
Email	<a href="mailto:info@dolphinsolutions.co.uk">info@dolphinsolutions.co.uk</a>
Description	Contemporary grab rail
Assembly Code	D2090900
Address	Southpoint, Compass Park, Bodiam, Robertbridge, TN32 5BS
Keynote	
Type Comments	
Cost	

Family Types: New..., Rename..., Delete

Parameters: Add..., Modify..., Remove

Lookup Tables: Manage...

OK Cancel Apply Help