



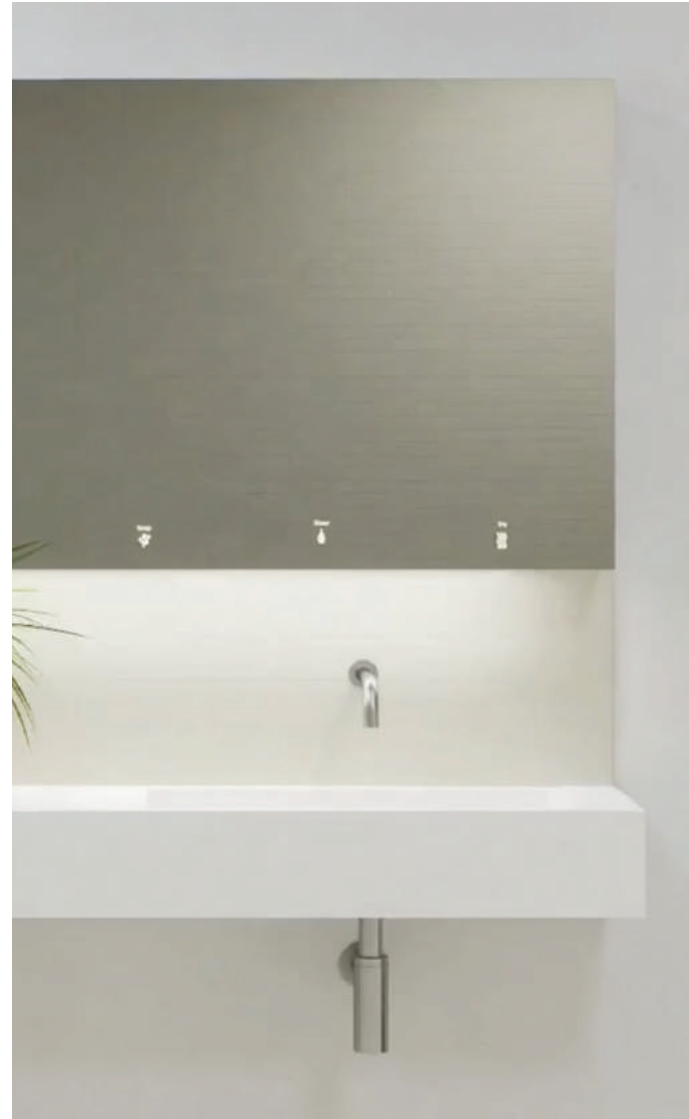
DOLPHIN

WALL PLATE SYSTEM

The Dolphin wall plate system is a way to make your life easier when installing taps on site, a way to ensure that your tap bodies remain pristine during the installation period, and a way to ensure access to the tap for maintenance purposes is always readily available in case of future emergencies or repair work.

BENEFITS OF THE WALL PLATE SYSTEM

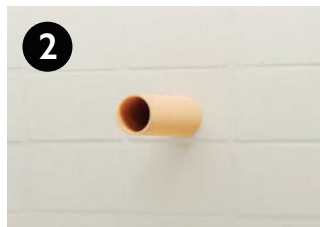
- Allows you to install tap bodies after the final wall finish has been fitted – avoiding your taps getting covered in grout or tile adhesive or any other installation materials.
- Allows for access to the inner workings of the tap after the installation is complete – meaning that in the case of leakage or malfunction there is no need to destroy your washroom wall just to get to the source of the issue
- This fitting stops any rotation of the tap after installation (a common issue) and allows for retightening of the fixture via the grub screw.
- Allows secure mounting of a fitting on fragile splashback material such as tile, glass or thin stone as there is no tension or force created against the fragile surface to crack it unlike the more common fixing methods that require tightening of a back-nut.
- Negating the need for access to the back of a fitting, unlike the common fixing method where access to the back of a fitting is vital for later servicing.



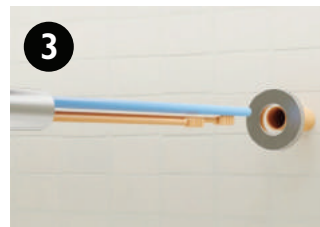
HOW IT WORKS



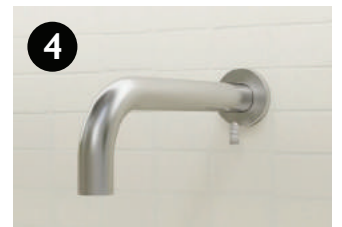
The wall plate fitting is tightened to the base wall, be that a stud wall or a brick wall, with a hole to be drilled allowing for the tap leads and water feed to exit out into the cavity.



The splashback (glass, solid surface, stone, tile, etc.) is fitted over the spigot of the wall plate fitting, with a hole drilled to allow the spigot to protrude out the front of the finished splashback.



The tap leads are fed through the wall plate and through the conduit up or down into the cavity.



The tap body is fixed to the spigot with a grub screw.

Dolphin Solutions Ltd

Southpoint, Compass Park,
Junction Road
Bodiam, TN32 5BS,
United Kingdom

T +44 (0)1424 202 224
info@dolphinsolutions.co.uk
dolphinsolutions.co.uk
© Dolphin Solutions Ltd



DOLPHIN