



25540

DOLPHIN WALL PLATE MOUNTING KIT FOR INFORM (SMART) TAP

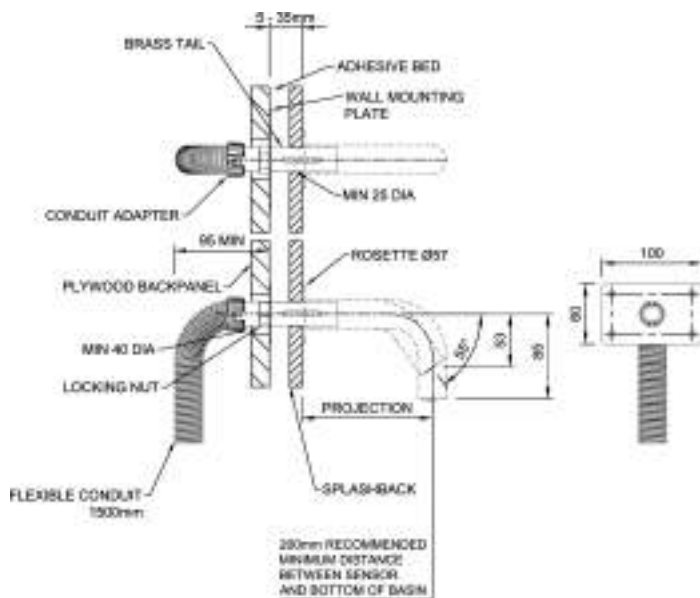
INSTALLATION GUIDE

COMPATIBLE TAP PRODUCT CODES

DSI02.XXX

DSI04.XXX

DSI22.XXX



PACK CONTENTS

- 1 25276 Conduit
- 2 25272 Conduit Adapter
- 3 25663 Nut
- 4 25274 Back Plate
- 5 25664 Tail
- 4x Screws (May differ to that required for wall construction).



INSTALLATION

1 IMPORTANT: Fit Wall Mounting Kit before finishing the Wall. Wall Mounting Kit supplied assembled. DO NOT disassemble.



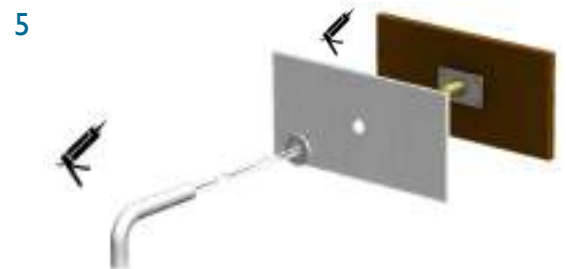
Prepare Ø40mm hole in Back Panel



Pass conduit and conduit adapter through the Ø40mm hole



4 Fix the Wall Mounting Kit assembly with 4 screws supplied. IMPORTANT: Slot to be on underside of tail. Ensure wall plate is level as this dictates tap angle and rotation. Protect Brass Tail with low tack tape / other suitable method



5 Fit Splashback with adhesive (or other fixing method as required) leaving mounting assembly protruding (thru Ø25mm hole) ready for Inform Tap Installation (See separate installation guide).