

ALAVO

# DOLPHIN ALAVO

---

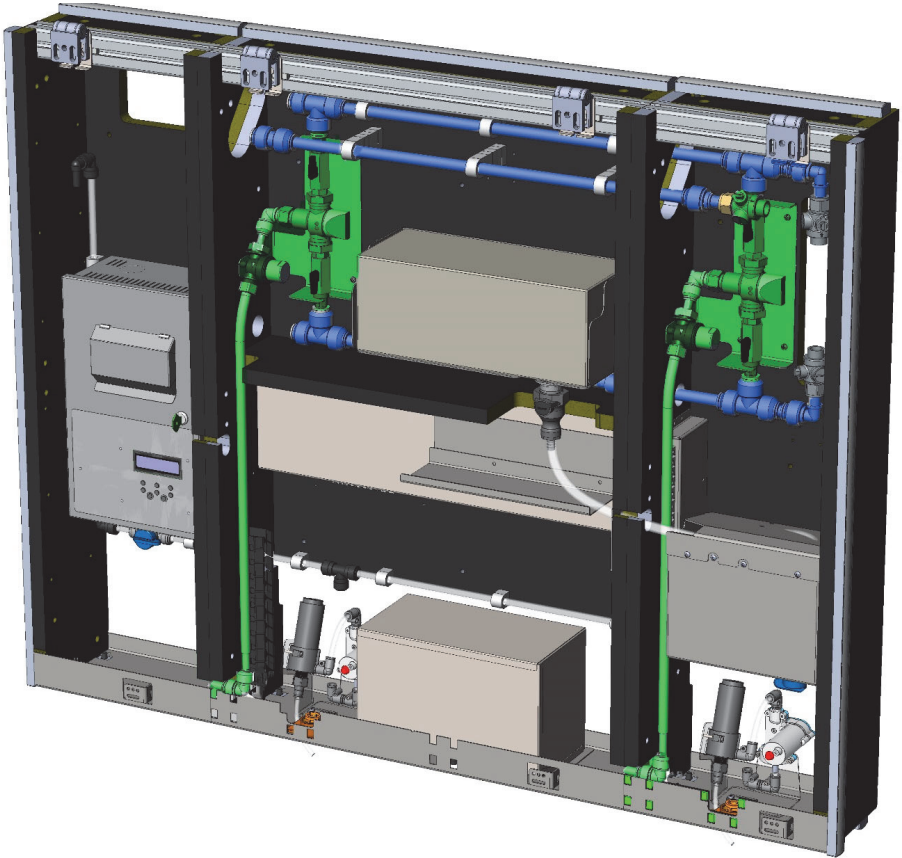
PLUMBING COMPONENTS DETAILS AND APPROVALS



January 2021



Note below two distinct elements to the plumbing system indicated by the two colours:



The parts coloured in **blue** are as follows:

- > 15mm barrier PE-X pipe (white)
- > 15mm Superseal Tube support
- > 15mm Equal straight connector
- > 15mm x ½ straight tap connector
- > 15mm x ½ bent tap connector
- > 15mm Equal Tee

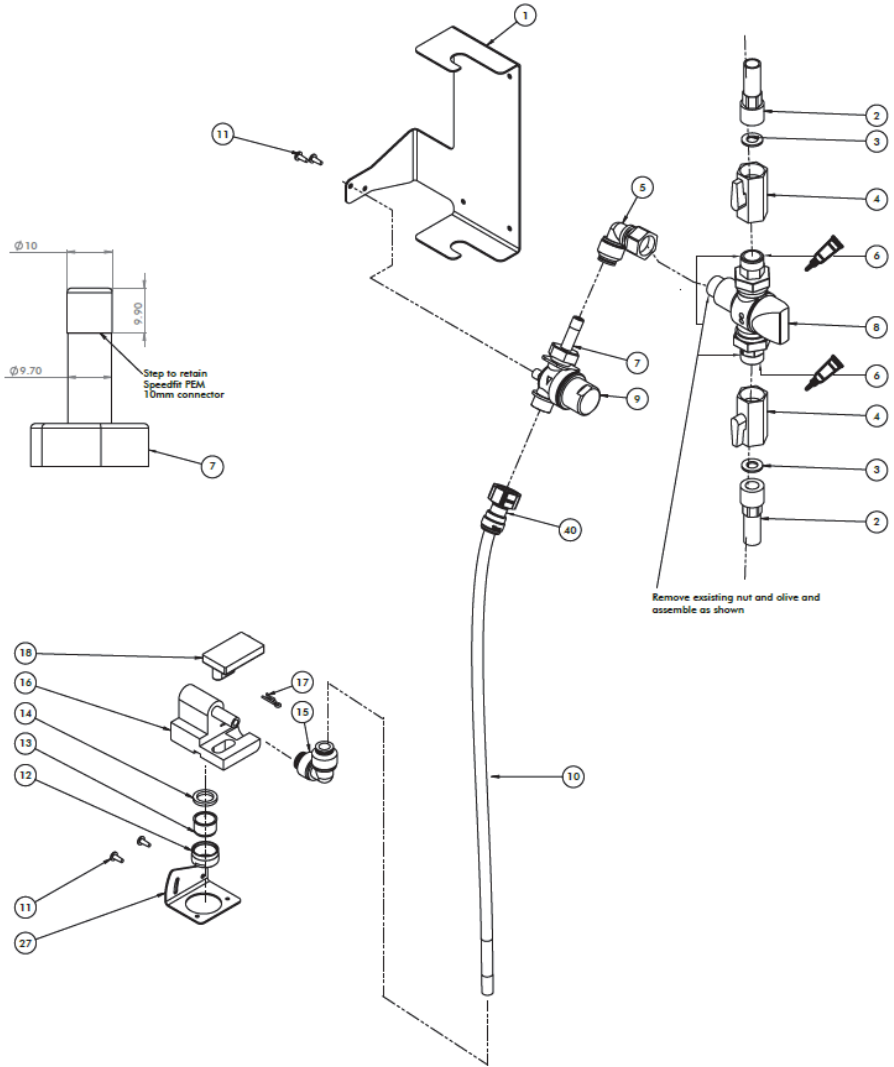
These are all currently WRAS approved under approval number 1809901 –

<https://www.wras.co.uk/search/products/1809901>

The parts coloured in **green** on the previous page are all part of our DBAT1 tap which is currently WRAS approved under approval number 1804080

<https://www.wras.co.uk/search/products/1907010>

and an exploded view is below:



The TMV (part 8 above) is the AL0220 15mm 5a1401.

The WRAS approval document and TMV2 and 3 certificates are available for download.

The flexible pipe (part 10 above) is Super Speedfit 10mm LLDPE TUBE Natural PE-1007-100M-N and is WRAS approved under approval number 1704079 <https://www.wras.co.uk/search/products/1704079>. The push-fit components (parts 5, 15 & 40 above) are also WRAS approved under the same approval.



**Dolphin Solutions Ltd**

Southpoint, Compass Park, Bodiam,  
Robertsbridge, TN32 5BS

Tel: +44 (0)1424 20 22 24  
Fax: +44 (0)1424 205 200  
[info@dolphinsolutions.co.uk](mailto:info@dolphinsolutions.co.uk)  
[www.dolphinsolutions.co.uk](http://www.dolphinsolutions.co.uk)