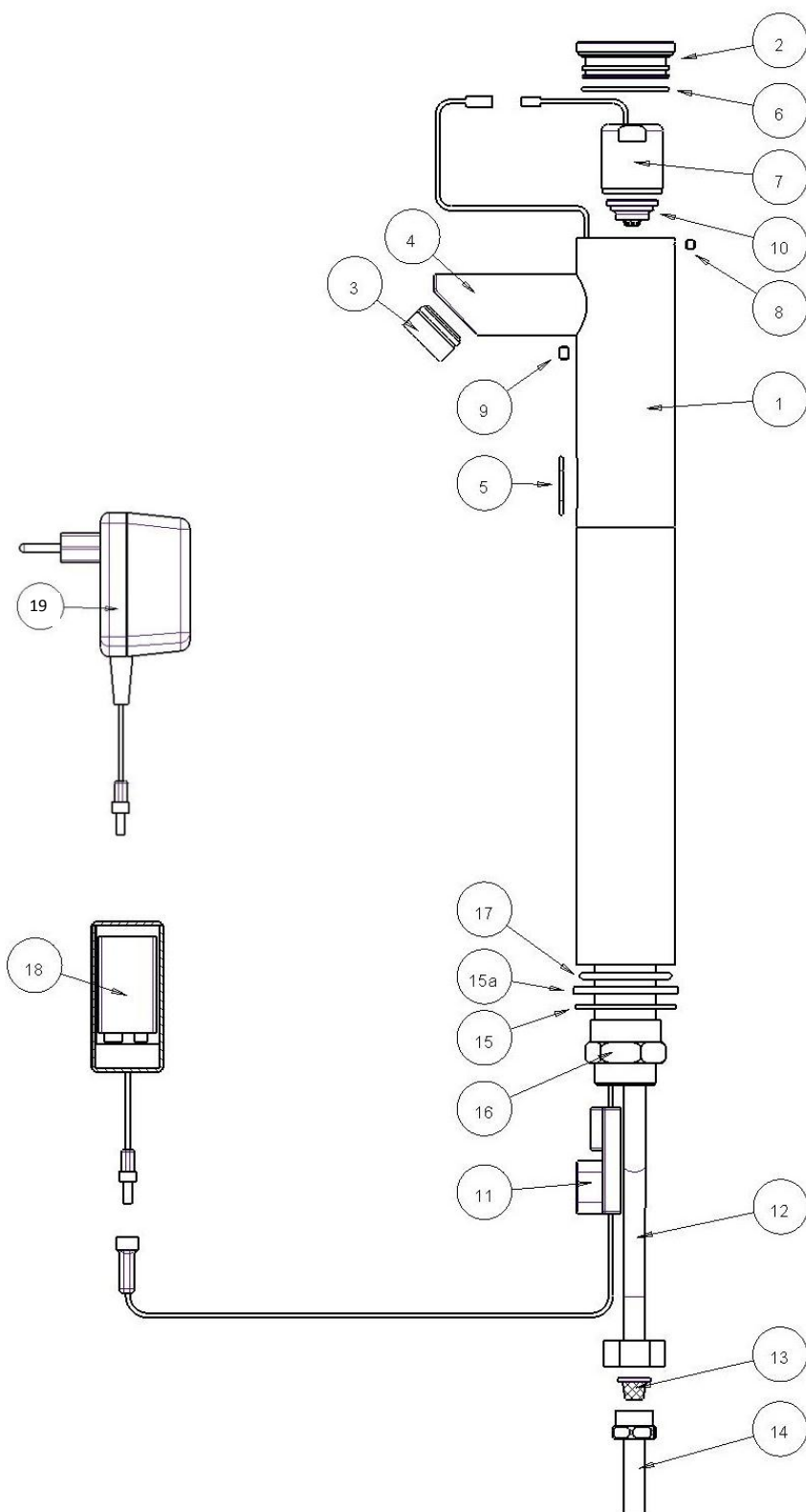


DBL200/DBL225 Tap Range – Parts Diagram



Item	Description	Part No.
-	Seals and Screws Kit	DB07210022
6	O-ring	
17	O-ring	
15a	Gasket	
8	Screw	
9	Screw	
5	O-ring	
-	Sensor Kit	DB07220042
11	Infra-Red Sensor	
5	O-ring	
-	Filter Adapter Kit	DB07212001
13	Filter	
14	Nipple	
-	Cover Kit	DB07270003
2	Cover	
6	O-ring	
-	Solenoid Valve Kit	DB07230017
7	Solenoid valve	
10	Diaphragm	
10	Diaphragm	DB04500001
18	Battery Box (IP67 version)	DB83F
18	Battery Box	DB82F
19	9V Transformer (100mA)	DB70F
19	9V Transformer (300mA)	DB85F