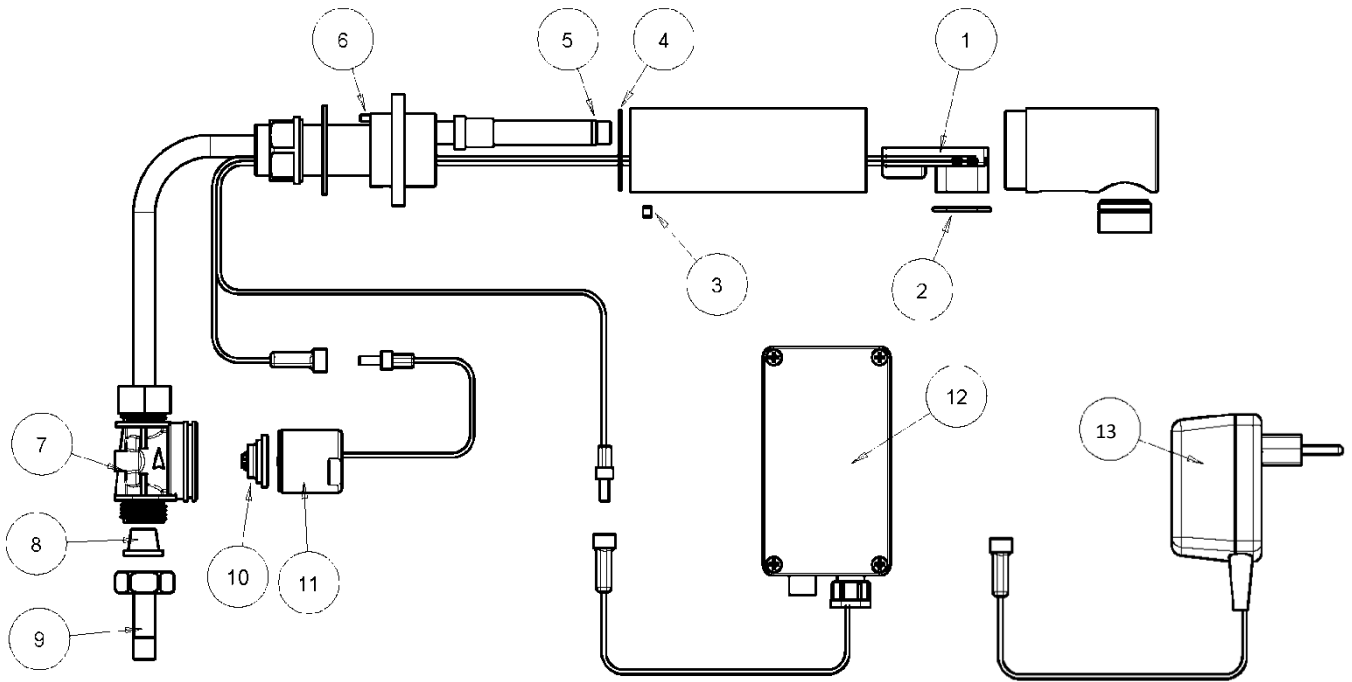


# DB400/DB425 Tap Range - Parts Diagram



Item	Description	Part No.	Item	Description	Part No.
-	<b>Seals and Screws Kit</b>	<b>DB07210034</b>	-	<b>Solenoid Valve Kit</b>	<b>DB07230017</b>
2	O-ring		11	Solenoid valve	
5	O-ring		10	Diaphragm	
4	O-Ring				
3	Screw		<b>1</b>	<b>Interoperable LS9V1.2WWPC1</b>	<b>DB07500065</b>
6	Screw				
			<b>10</b>	<b>Diaphragm</b>	<b>DB04500001</b>
-	<b>Self-Adaptive Sensor Kit</b>	<b>DB07220056</b>			
1	Self-Adaptive Sensor		<b>12</b>	<b>Battery Box (IP67 version)</b>	<b>DB83M</b>
2	O-ring		<b>12</b>	<b>Battery Box</b>	<b>DB82M</b>
-	<b>Solenoid BS-Housing Kit</b>	<b>DB07231008</b>	<b>13</b>	<b>9V Transformer (100mA)</b>	<b>DB70M</b>
7	Solenoid valve's body		<b>13</b>	<b>9V Transformer (300mA)</b>	<b>DB85M</b>
8	Filter				
9	Nipple				
			-	<b>DB425 Transformer Range</b>	<b>DB07220239</b>
				<b>Replacement 4 pulse SA</b>	
				<b>Sensor 08002325 c/w O-ring</b>	
			-	<b>DB400 Battery Range</b>	<b>DB07220056</b>
				<b>Replacement 2 pulse SA</b>	
				<b>Sensor 08002110 c/w O-ring</b>	