

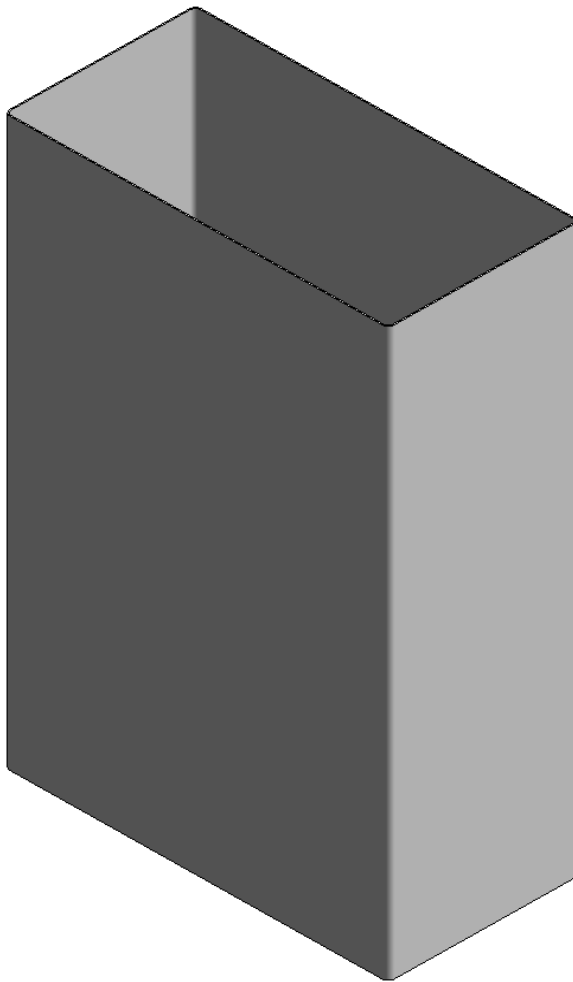


# DOLPHIN SOLUTIONS LIMITED

## DOLPHIN WASTE BIN

### WALL OR FLOOR MOUNTED

09.1158 / 09.1159



Family Types

Name: 09.1158 / 09.1159 Dolphin Waste Bin - Wall or Floor Mounted

Parameter	Value
<b>Text</b>	
Warranty	This product is covered by a 12-month warranty from the date of purchase to be free from defects if =
Care and Maintenance	Clean with soap and warm water, dry with a clean soft cloth. To maintain finish use any industrial ste =
<b>Materials and Finishes</b>	
Material	Bin = 0.9mm Stainless steel 1.4301 (304) grade Feet = Rubber Braket = 1.2mm Stainless =
Finish	Satin stainless steel =
<b>Dimensions</b>	
Width	305mm =
Weight	Approximate unit weight = 4.2kg =
Projection	152mm =
Height	468mm =
<b>General</b>	
Usage	Medium Traffic Areas =
Product Page Link	<a href="https://www.dolphinsolutions.co.uk/en/en/product/dolphin-waste-bin-wall-floor-mounted">https://www.dolphinsolutions.co.uk/en/en/product/dolphin-waste-bin-wall-floor-mounted</a> =
Product Data	Wall or surface mounted waste paper bin with linen liner bag. Different models available as described =
Capacity Bin	20 litres =
<b>Identity Data</b>	
URL	<a href="http://www.dolphindispensers.co.uk">www.dolphindispensers.co.uk</a> =
Type Comments	=
Tel No.	+44 (0) 1424 202224 =
Model	09.1158 /09.1159 =
Manufacturer	Dolphin Solutions Limited =
Fax No.	+44 (0) 1424 205200 =
Email	<a href="mailto:info@dolphindispensers.co.uk">info@dolphindispensers.co.uk</a> =
Description	Waste bin - wall or floor mounted =
Assembly Code	E1010900 =
Address	Southpoint, Compass Park, Bodiam, Robertsbridge, TN32 5BS =
Keynote	=
Cost	=

Family Types: New... Rename... Delete

Parameters: Add... Modify... Remove

Lookup Tables: Manage...

OK Cancel Apply Help