

02.4031

DOLPHIN RECESSED COMBINATION UNIT WITH HIGH SPEED HAND DRYER, BIN AND PAPER TOWEL DISPENSER

- > 3 in 1 Recessed satin stainless steel combination paper towel
- > 10 litre stainless steel waste paper bin and back box.
- > Capacity – 200 "C" fold or 300 Interleave paper towels, removable

WIDTH	375 MM
HEIGHT	1579 MM
PROJECTION	16 MM

SPECIFICATION

Recessed Mounted High Speed Hand Dryer: Right hand hinged door – faced in acrylic/glass/corion/stainless steel (use correct code) to match colour _____, vertically brushed satin stainless steel dryer bowl and stainless steel back box. Rated: 240V, 50/60Hz, 1000W, IP23 rated. Manufactured by Dolphin Solutions Ltd.

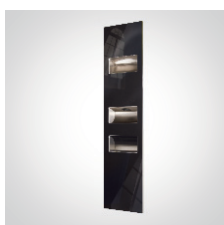
Recommended wall opening: 360w x 1562h x 112d mm

PRODUCT CODES

- > With stainless steel front **02.4031.002**
- > With glass front **02.4031.10.xx**
- > With powder coated front **02.4031.002.5.xx**
- > With corian front **02.4031.34.xx**
- > Surface mounted version **02.4431**



02.4031



02.4031.1



02.4031.3

- > Operating Voltage 240VAC 50/60Hz 1kW
- > Output Warm Air Volume 42-60 CFM (71-102 m3/h) Adjustable
- > Output Warm Air Temperature 131°F (55°C) at ambient T = 77°F (25°C), Adjustable
- > Output Air Speed 102mph (150ft/s) [45.5m/s {164km/h}] – 157mph (230ft/s) [70m/s {252km/h}]
- > Adjustable Sound Level 68.9 dB-A Min @ 2m, 74.3 dB-A Max @ 2m, Adjustable
- > Motor Type 0.67HP, 16-29krpm Brush Type, Dual Ball Bearings, Adjustable
- > Motor Thermal Protection 240VAC, Auto Resetting Thermostat turns unit off @ 203°F (95°C)
- > Heater Element ON/OFF Heating options: Range Adjustable, 325-500W
- > Heater Thermal Protection Auto Resetting Thermostat turns heater element off @ 185°F (85°C), Resets @ 167°F (75°C), Thermal cut-off @ 288°F (142°C)
- > Drying Time less than 15 seconds
- > Standby Power Less than 0.5W

Circuit Operation Infrared Automatic, self-adjusting

- > Sensor Range Standard 152mm ±20mm (6")
- > Timing Protection 60 seconds auto shut off
- > Timing Duration 1 second delayed turn off after last sensor reading
- > Cover Type 1.2mm 1.4301(304) stainless steel
- > Net Weight 25Kg

Data varies depending on motor speed and heater element on/off

MATERIALS

- > Door: 1.2mm satin finish stainless steel grade 1.4301 (304) to BS EN 10088-1
- > Bowl & Chutes: 0.7mm satin finish stainless steel grade 1.4301 (304) to BS EN 10088-1
- > Back box: 0.9mm stainless steel grade 1.4301 (304) to BS EN 10088-1
- > Bin: 0.7mm stainless steel grade 1.4301 (304) to BS EN 10088-1

CAPACITIES

	Length Min-Max	Width (mm)	Quantity
C Fold paper towels	225-250	90-100	200
Interleave paper towel	215-250	80-100	300
Bin	10 litres		

RECOMMENDED MOUNTING HEIGHTS (MM)

From top edge of dryer aperture to finished floor level

- > Men 1165
- > Women 1090
- > Children 990-1090

OPERATION

Paper Towel Dispenser:

- > To refill, open door with key provided. Place paper towels between guides.

Hand Dryer:

- > Shake excess water from hands
- > To activate dryer place hands in dryer bowl and repeatedly turn hands over until dry. Heater has built in safety thermal cut off. Sensor has 1 second inactivity cut off.

Waste Bin:

- > The bin can be accessed by opening door with key provided
- > Emptying of bin: Open door; slide bin forward and remove from guide rails, fit suitable bin liner. Push bin back over slide rails into back box void and shut door

CARE AND MAINTENANCE

- > Periodic cleaning of the unit is recommended to ensure optimum performance.
- > Clean with soap and warm water; dry with a clean soft cloth.
- > To maintain finish of stainless steel parts use any industrial steel cleaner; polishing along the material grain with a clean soft cloth.
- > Internal cleaning; Disconnect the electrical supply.
- > Remove the two cover mounting screws
- > Remove the cover
- > Clean all dust/lint from the interior of the dryer.
- > Replace the cover. Do not over tighten the screws.
- > Abrasive cleaners, chloride cleaning agents and carbon steel brushes/steel wool will scratch the stainless steel and should not be used.

MEETS SKA RATING CRITERIA FOR ENERGY EFFICIENT HAND DRYERS ID E24

This product falls within the scope of the Waste Electrical & Electronic Equipment Regulations Directive (WEEE) This product should not be disposed of with household waste. Please recycle where facilities exist or contact Dolphin Solutions Ltd for further assistance. Check with your local authority for further recycling advice



WARRANTY

This product is covered by a 12-month warranty from the date of purchase to be free from defects if installed and maintained in accordance with these instructions. Dolphin Solutions will replace or repair (as appropriate) free of charge any product with a proven manufacturing defect if reported within the warranty period.

Dolphin Solutions Ltd reserves the right to amend the design or dimensions without formal notice.