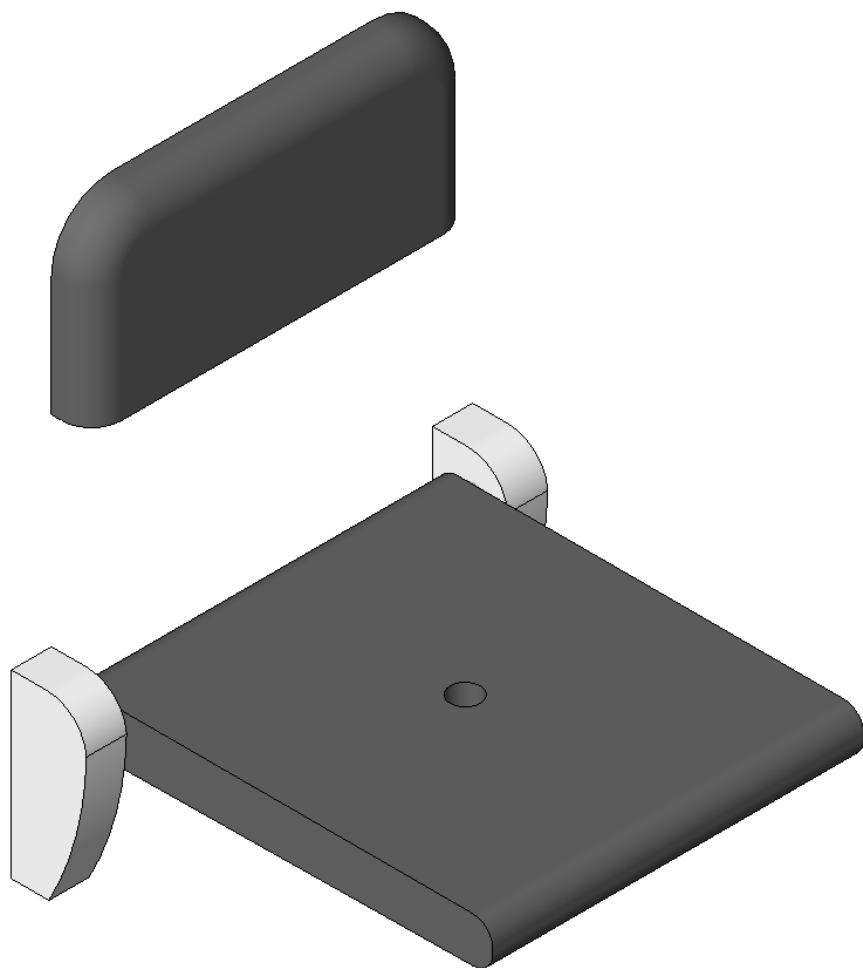


DOLPHIN SOLUTIONS LIMITED

DOLPHIN FIXED FOLDING SEAT

FIXED BACK REST

DP600210 / DP600220



Family Types

Name: DP600210 / DP600220 Dolphin Fixed Folding Seat / Fixed Back Rest

| Parameter | Value | F |
|----------------------|---|---|
| Dimensions | | |
| Width | Back Rest = 380mm / Seat = 460mm | = |
| Projection | Seat = 435mm | = |
| Height | Back Rest = 180mm / Seat = 180mm | = |
| General | | |
| Product Page Link | https://www.dolphinsolutions.co.uk/product/fixed-folding-seat | = |
| Product Data | Fixed folding seat. Fixed Back Rest for Folding Seat. Polished Chrome plated s | = |
| Identity Data | | |
| URL | www.dolphinsolutions.co.uk | = |
| Type Comments | | = |
| Tel No. | +44 (0) 1424 202 224 | = |
| Model | DP600210 / DP600220 | = |
| Manufacturer | Dolphin Solutions Ltd. | = |
| Fax No. | +44 (0) 1424 205 200 | = |
| Email | info@dolphinsolutions.co.uk | = |
| Description | Fixed folding seat | = |
| Assembly Code | D2010900 | = |
| Address | Southpoint, Compass Park, Junction Road, Bodiam, TN32 5BS | = |
| Keynote | | = |
| Cost | | = |

Family Types

New...

Rename...

Delete

Parameters

Add...

Modify...

Remove

Lookup Tables

Manage...

OK Cancel Apply Help