

11.3551 / 11.3552

## DOLPHIN WALL MOUNTED BULK PACK TOILET TISSUE DISPENSER

- > Wall mounted toilet tissue dispenser
- > Usage: Low Traffic Areas
- > Brushed or polished stainless steel finish

WIDTH	134 MM
HEIGHT	280 MM
PROJECTION	111 MM

### SPECIFICATION

Wall/Partition mounted toilet tissue dispenser. Model number 11.3551 vertically brushed satin/11.3552 mirror polished\* finish stainless steel with flush mounted lock. Manufactured by Dolphin Solutions Ltd. \*Delete one reference

### MATERIAL

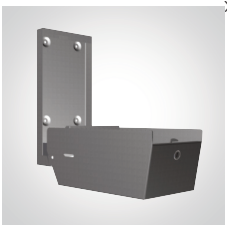
- > Casing: 11.3551 0.9mm satin finish stainless steel grade 1.4301 (304)/11.3552 0.9mm mirror polished finish stainless steel grade 1.4301 (304)

### PRODUCT CODES

- > Brushed satin finish

11.3551

> Approximate unit weight: 1.5kg



Open view